



GTM GERMANY | GLOBAL DATA CENTERS EMEA

# Hamburg 1 Data Center

Fulfilled requirements for high availability

Site brochure



## Home to the Cloud

Hamburg is the second-largest city in Germany. The city has one of Germany's most significant economic centers, home to Europe's third-largest port and a highly important financial sector. Germany's oldest stock exchange and merchant bank, Berenberg Bank, both reside in the city. Hamburg has a very well-established media industry, with major regional broadcaster NDR, publishing firms Gruner + Jahr and Axel Springer AG, and newspapers 'Der Spiegel' and 'Die Zeit' based in the city. A budding technology industry is emerging

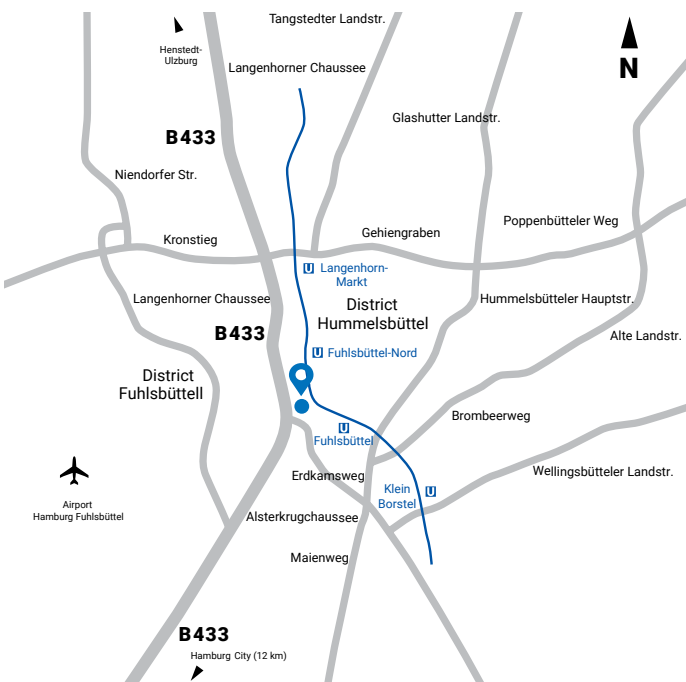
in Hamburg, with many start-ups forming. There is also a large amount of established technology companies who have a base in Hamburg such as Adobe Systems, Facebook, Google, Microsoft and Twitter.

In Hamburg, we operate a colocation center with a total of 1,230 sqm of high availability data center space. Together with Frankfurt 2 and Munich 1, it's one of our three smaller data centers, which fulfils all the requirements of high availability.

## A solution for every requirement

With up to 1,230 sqm of IT space, and about an IT load of 0.8 MW Hamburg 1 offers complete solutions for housing your IT and network systems in a secure, high-availability environment. We provide you with the best possible physical and technical infrastructure supported by n+1 UPS systems, generator backup, as well as highly redundant cooling systems. Hamburg 1 holds multiple certifications such as DIN EN ISO 9001 and is connected to major carrier hubs and cloud networks. To validate hybrid cloud services and innovations faster and at lower cost, our **Technology Experience Labs** provide the perfect hosted ecosystem in a live data center environment.

## Location



## Secure and flexible space built to your specifications

Your requirements are the most important aspect of our service offering. You choose, we deliver. Whether you select a building shell which you configure yourself, or we construct it according to your specifications, or even if you want to rent a single rack in our shared environment, we can accommodate your needs. We will also ensure the space is highly available through our years of engineering critical data centers while maintaining high levels of security to keep your infrastructure and data safe.

## Infrastructure

### Data center space

- 1,230 sqm of IT space
- flexible colocation deployments: single rack colocation, cages, suites
- ancillary spaces (offices, storages, and pre-installation rooms) available
- common areas such as meeting rooms, catering area, and showers

### Cooling

- redundant water-cooled system supported by free-cooling (n+1)
- cold air supply from »bottom to top« via raised floor
- star-shaped chilled water pipes to CRAC units with redundant pumps

### Power

- on-site substation delivering 1.6 MVA of power
- maximum client IT load of 0.8 MW
- average power density of 1.0 kW/sqm
- own medium-voltage feed from the European grid via local power supplier (2 x 800 kVA transformer station)
- UPS n+1 redundant with bridging time minimum 15 minutes battery at full load
- emergency generators (1 x 1,400 kVA) fuel storage for 48 hours

### Fire protection

- monitoring with automatic digital fire alarm system
- smoke detection early warning system (VESDA) in the return air path
- mobile gas extinguishing systems and hand-held fire extinguishers for first firefighting actions
- fire protection walls with fire resistance 90 minutes

### Security

- Service Operation Center for security and operation with 24/7 fallback to Berlin 1
- redundant monitoring of all critical functions underpinned by standardized security
- video surveillance systems for the external building facade and internal areas

## Overview of our main product offerings:

<b>Fully-fitted</b>	Colocation rack
	Carrier rack
	Cage
<b>Supporting products and services</b>	Suite
	Multi service interconnection platform
	Cross connects
	Remote-hands

- card swipe entry/exit to all doors and persons separation locks per data center building
- preventive risk assessment as well as continuous testing and training of operating personnel

### Connectivity

- carrier-neutral
- carrier mix from global tier 1 supplier to regional supplier
- connectivity to the major carrier hubs
- pre-spliced dark fiber available on demand
- redundant cabling infrastructure with diverse paths
- high-performance internet access
- inter data center connectivity between NTT data centers for geo-redundant solutions
- multi cloud interconnection platform to connect our clients to major cloud service providers such as Amazon Web Services, Microsoft Azure, and Google Cloud Platform

### Additional services

- consulting, general and implementation planning for development projects
- client implementation
- installation services
- remote-hands service provided by the technical infrastructure on-call service
- facility services

### Global data center network

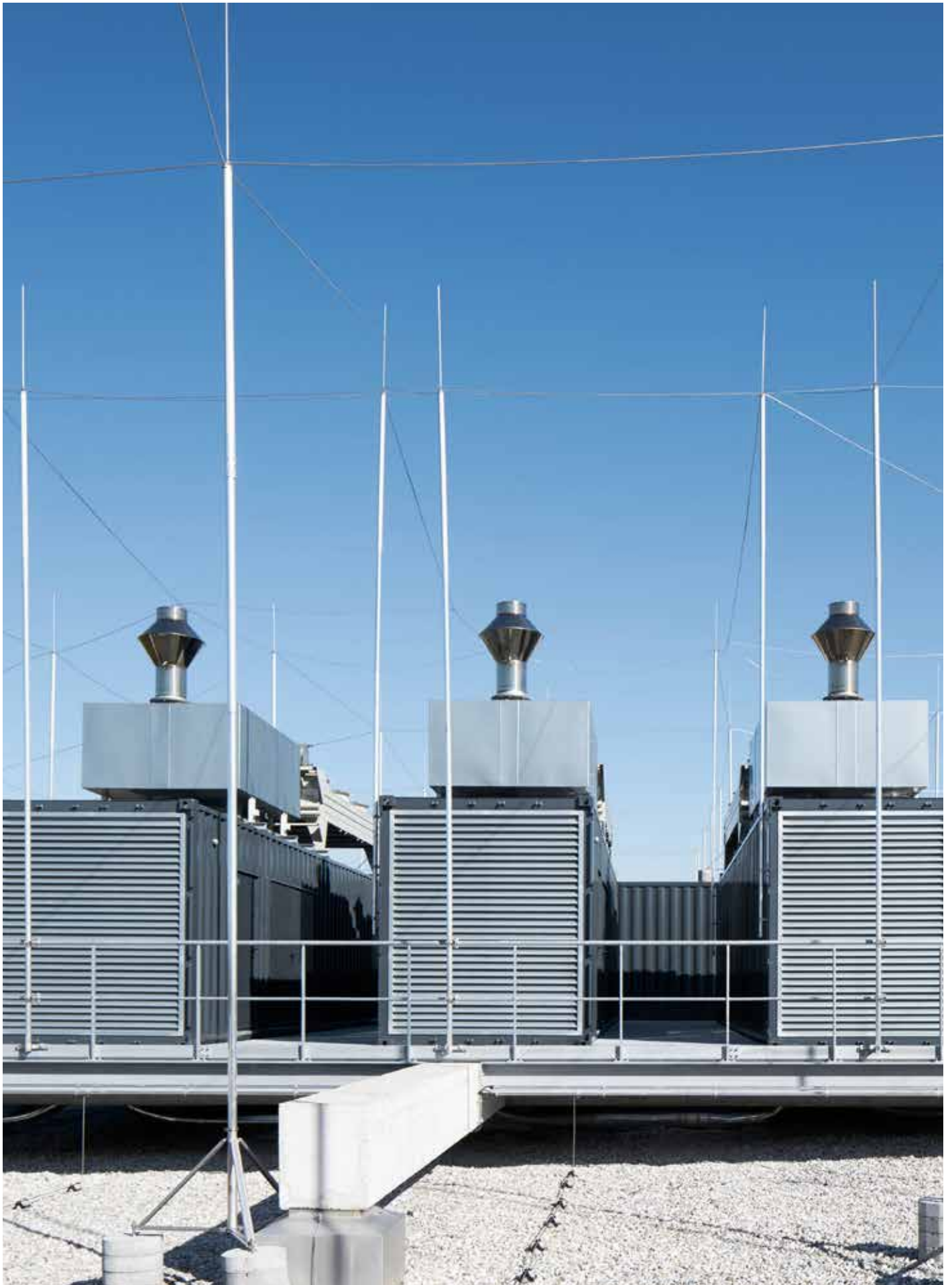
- part of the NTT family of over 160 data centers around the world
- connectivity options to the global NTT network
- access and use of Technology Experience Labs with a worldwide partner network

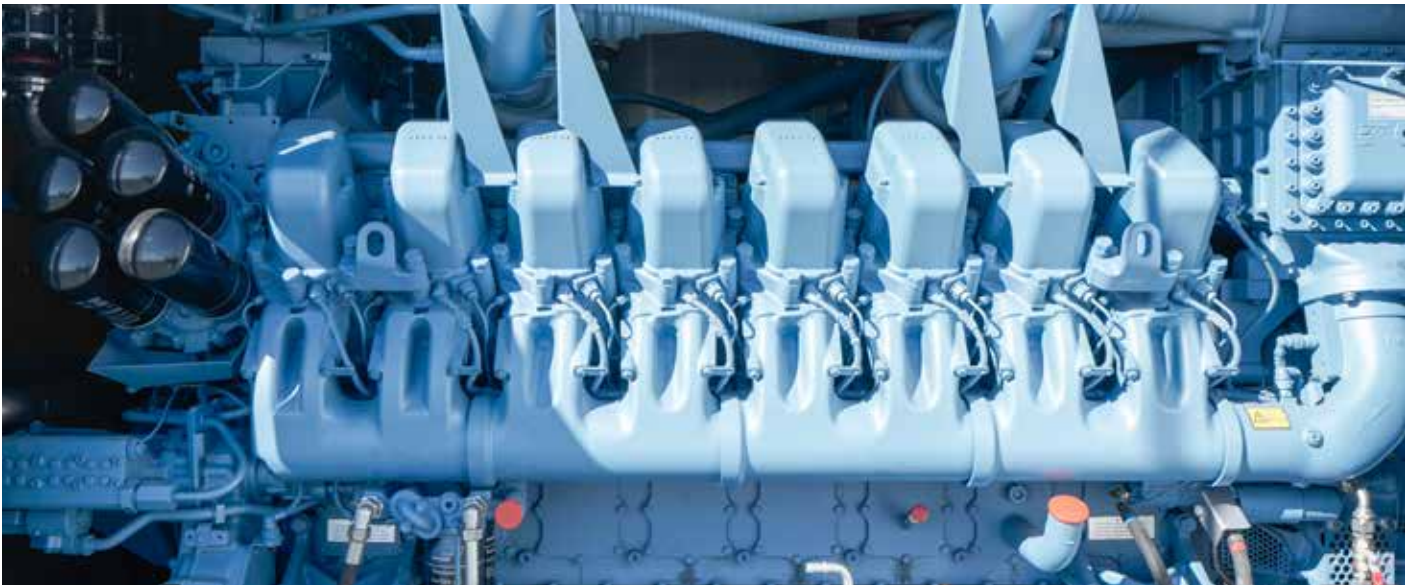
### Service Level Agreement

- 99.95% power uptime availability
- connectivity availability

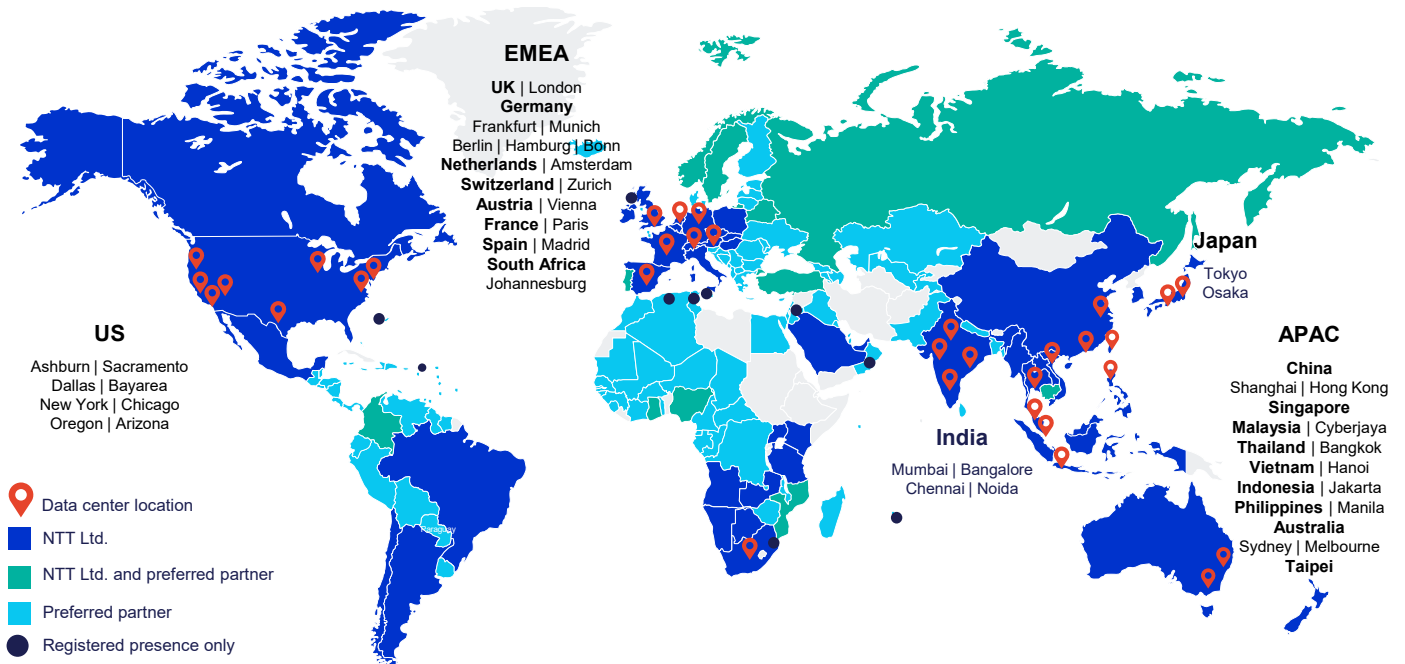
## Technology Experience Lab

- **Technology spaces:** Globally available facilities in productive data centers of NTT that bring together more than 140 technology partners to enable prospects and clients to test and validate, but also innovate on the latest technologies.
- **Industry communities:** Today, information technologies are a key enabler to many organizations. Our industry communities help these organizations to identify relevant technology providers and connect with helpful contacts.
- **Start-ups and Venture Capital:** Many times, start-ups are major drivers when it comes to disrupting various industries. Our start-up unit brings together start-ups, corporates and venture capitalists to enable and accelerate innovation.





**Flexible connection to data centers and clouds: 20+ countries and 450,000 sqm server space**



**About the Global Data Centers division of NTT Ltd.**

Global Data Centers is a division of NTT Ltd. and incorporates DPA, e-shelter, Gyron, NetMagic, NTT Indonesia Nexcenter, RagingWire and other NTT Communications group Data Center divisions. Our combined global platform is one of the largest in the world, with over 160 data centers spanning more than 20 countries and regions including North America, Europe, Africa and APAC. As a neutral operator, we offer access to multiple cloud providers, a large variety of Internet Exchanges and telecommunication network providers including our own IPv6 compliant, tier 1 global IP network. Our clients benefit from tailored infrastructure and experience consistent best practices in design and operations across all of our highly reliable, scalable, and customizable data centers.

NTT Ltd. is a global technology services company bringing together the expertise of 31 brands, including NTT Communications, Dimension Data, and NTT Security. We partner with organizations around the world to shape and achieve outcomes through intelligent technology solutions. For us, intelligent means data-driven, connected, digital, and secure. As a global ICT provider, we employ more than 40,000 people in a diverse and dynamic workplace, and deliver services in over 200 countries and regions. Together we enable the connected future. Visit us at our new website **hello.global.ntt**

# NTT in numbers and facts



## Expertise

We help you to do great things.



Over **40,000**  
people are working for  
NTT Ltd. worldwide



Delivering services  
in more than  
**200** countries



**300,000**  
people are part of the  
NTT Group



## Technology solution

We have a full suite of technology  
solutions to help you create value.



## Partner

We work together with you.  
We're an extension for your business.



## Intelligent

For us, intelligent means helping you to be data driven, connected, digital, and secure.



5

regions



## Globally

We are wherever you are, making it easier for you to focus on your core business.



120

years of heritage in the NTT Group



## Outcomes

We shape the outcomes you're looking for.



**Contact**

Hamburg 1 Data Center  
NTT Global Data Centers EMEA GmbH  
Langenhorner Chaussee 44  
22335 Hamburg  
Germany  
**[datacenter.hello.global.ntt](mailto:datacenter.hello.global.ntt)**